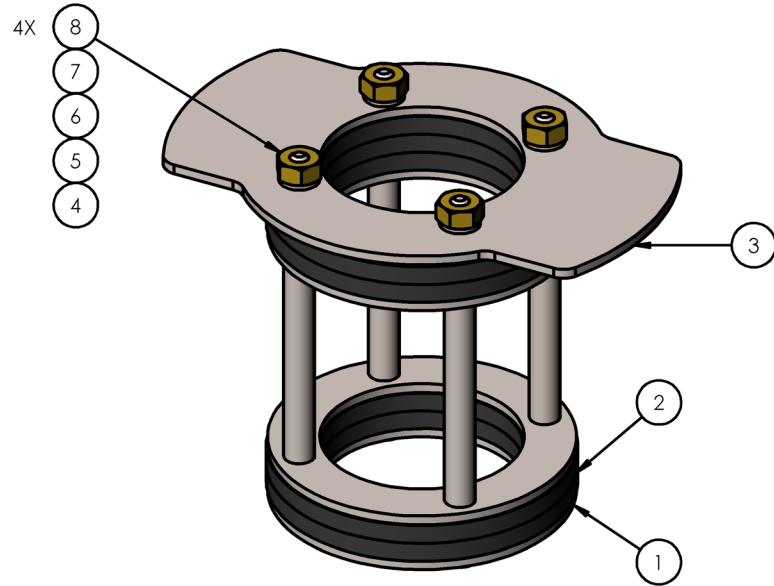



THE INFORMATION CONTAINED IN THIS DRAWING IS THE SOLE PROPERTY OF QED ENVIRONMENTAL ANY REPRODUCTION IN PART OR WHOLE WITHOUT THE WRITTEN PERMISSION OF QED ENVIRONMENTAL IS PROHIBITED.



ITEM	PART NUMBER	DESCRIPTION	Default/ QTY.
1	421-1-CP R3	Clamp Plate	3
2	421-1-GA R1	Rubber Gasket	5
3	421-1-TP R5	Top Plate	1
4	CB25	Carriage Bolt	4
5	RW25	Retaining Washer	4
6	S25	Spacer	4
7	W25	Narrow Flat Washer	4
8	N25	Hex Nut, Brass	4

**APPLICATION CONFIRMATION**  
 WELL CAP IS DESIGNED FOR  
 4 IN SCH 80 PVC WELL CASING  
 APPROX INSIDE Ø 3.826 IN

CUSTOMER INITIALS \_\_\_\_\_

UNLESS OTHERWISE SPECIFIED, DIMENSIONS ARE IN INCHES AND INCLUDE PLATING REMOVE ALL BURRS	DRAWN BY	DATE	 <b>2355 BISHOP CIRCLE W, DEXTER, MI. 48130</b>
	IM	2015.08.27	
	CHECKED BY	DATE	
	-	-	
APPROVED BY	DATE	TITLE	
	-	-	<b>4 IN WELL CAP ASSEMBLY 2 IN GAS PIPE 1PORT</b>
NEXT ASSY	-	MATERIAL	DWG. NO. 421-1-wca-subm
USED ON	-	FINISH	SCALE 1:2
			SHEET 1 OF 1
			REV.