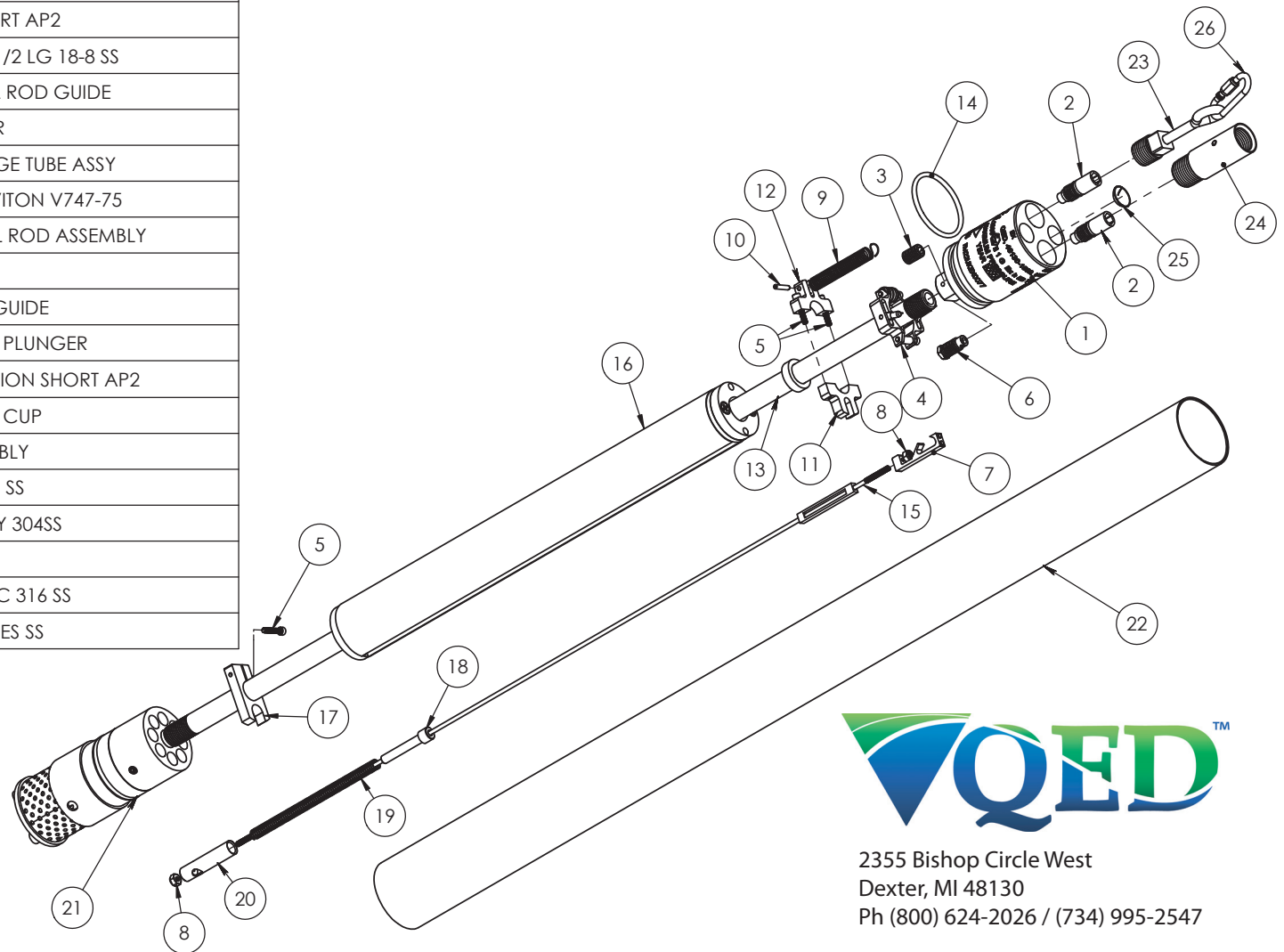


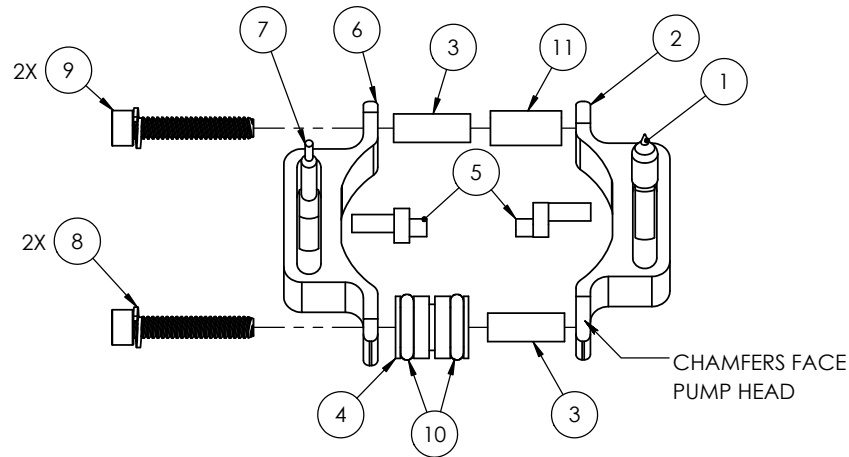
PARTS LIST

ITEM	PART #	QTY.	DESCRIPTION
1	206119	1	303 SS AP-2C HEAD ROLL-STAMP
2	301154	2	AP-2 MAGNET/HOLDER ASSY
3	201715	1	POPPET EXHAUST SEAT SHORT AP-2C
4	302903	1	LEVER ASSY SHORT AP2
5	201871	3	SCREW 4-40 X 5/8 SKT HEAD 18-8
6	300455	1	SEAT INT AP2 ASSY
7	300456	1	TIKI AP2 ASSY
8	201887	2	NUT 4-40 NYLOCK 18-8SS
9	201714	1	SPRING EXTENSION SHORT AP2
10	201886	1	PIN SPRING 3/32 DIA X 1/2 LG 18-8 SS
11	203358	1	AP-2C UPPER CONTROL ROD GUIDE
12	203359	1	AP-2C SPRING ANCHOR
13	300361	1	SHORT AP-2C DISCHARGE TUBE ASSY
14	200701	1	O-RING PARKER 2-127 VITON V747-75
15	300369	1	SHORT AP-2C CONTROL ROD ASSEMBLY
16	301150	1	FLOAT ASSY SHORT AP2
17	201578	1	AP-2C CONTROL ROD GUIDE
18	201564	1	AP-2C BOTTOM SPRING PLUNGER
19	201588	1	SPRING BTM COMPRESSION SHORT AP2
20	201568	1	AP-2C BOTTOM SPRING CUP
21	302837	1	AP2B 303SS BCV ASSEMBLY
22	201582	1	CASING SHORT AP2 304 SS
23	300406	1	SUPPORT/EYEB AP2 ASSY 304SS
24	300739	1	CV 3/8 MXF ASSY 303SS
25	201517	1	SCREEN AIR INTAK AP-2C 316 SS
26	206098	1	QUICK LINK 1/8 300 SERIES SS

EXPLODED VIEW OF SHORT BOTTOM-LOADING AP2 300420A

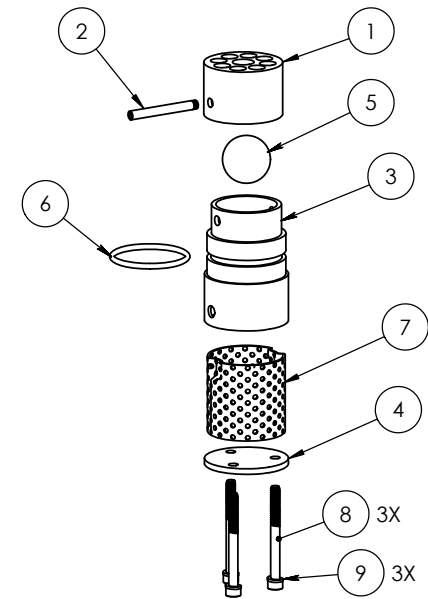


302903 - LEVER ASSEMBLY SHORT AP2



ITEM	PART #	QTY.	DESCRIPTION
1	202252	1	POPPET EXHAUST SHORT AP-2C 304SS
2	201512	1	LEVER EXHAUST AP2 303SS
3	201514	2	SPACER AP2 LEVER 316SS
4	201513	1	SPACER AP2 LEVER 316SS
5	203740	2	PIN PIVOT AP2 NITRONIC 60
6	201498	1	LEVER INLET AP2 303SS
7	201519	1	POPPET AIR IN AP2 303SS
8	201632	2	S.S. LEVER SCREW LOCK WASHER
9	201871	2	SCREW 4-40 X 5/8 SKT HEAD 18-8
10	202100	2	O-RING PARKER 2-009 VITON V747-75
11	206023	1	TIKI ROLLER

302837 - BCV AP2 303SS ASSEMBLY



ITEM	PART #	QTY.	DESCRIPTION
1	201523	1	CV TOP AP2 303SS
2	201565	1	PIN CV AP2 BL 304SS
3	206125	1	BCV SEAT AP2 FOR 1" BALL 303SS
4	204032	1	PLATE BTM AP2 304SS
5	201744	1	BALL, 1" TEFLON
6	200701	1	O-RING PARKER 2-127 VITON V747-75
7	205568	1	SCREEN INDENTED AP2BS 304 SS
8	201890	3	SCREW 10-24 X 2 SKT HD 18-8 SS
9	201889	3	WASHER #10 SPLIT LOCK 316SS