

LANDTEC System Login

User Id:

Password:

Log In

No IDs Found in Instrument

5 of 5

Instrument

Serial Number: GM07530

Version: Version 2.38 - 09/03/06

Operating Mode: GEM

Units: Imperial

Instrument Date: Jun 2, 2014 11:22:59 AM

Service Due Date: Nov 29, 2007 11:23:11 AM

Number of IDs: 0

Number of Readings: 9

Available Memory: 99%

Battery Level: Charging...

Project Setup

Readings

Instrument Configuration

Links

Project

CSLF Project (Local)

Save

Device Id	Flow Device
CSLPLANT	User Input
CSLFLAR1	User Input
CSLGHCAL	User Input
CSLF0005	Orifice Plate (Well Side, System Pressure)
CSLF0003	Orifice Plate (System Side, System Pressure)
CSLF0004	Orifice Plate (Well Side, System Pressure)
CSLE0002	Orifice Plate (System Side, System Pressure)
CSLE0001	Orifice Plate (System Side, System Pressure)
CSLE0004	Orifice Plate (Well Side, System Pressure)
CSLF0001	Orifice Plate (Well Side, System Pressure)
CSLF0002	Orifice Plate (System Side, System Pressure)
CSLI0005	Orifice Plate (System Side, System Pressure)
CSLH0001	Orifice Plate (System Side, System Pressure)
CSLH0002	Orifice Plate (System Side, System Pressure)
CSLF0003	Orifice Plate (System Side, System Pressure)

284 IDs

Comments

Site Questions

Add Id

Load IDs

Instrument

Current Instrument Contents

Send to Instrument

Device Id	Flow Device
-----------	-------------

0 IDs

Clear Instrument Memory

Clear Id List

Project has been created in LSGAM on this PC.

LANDTEC System Gas Analyzer Manager | LS Edition

Project

Readings

View

Archive

Route

LANDTEC System Login

User Id:

Password:

Create Archive...

Restore From Archive...

With project displayed go to archive [Create Archive]

Create Archive File

Projects

☒ Current

☐ All Offline

☐ All

☐ None

Routes

☐ Current

☐ All

☒ None

Readings

☐ Current

☐ Most Recent

☐ All

☐ Current Month

☒ None

☐ Current Year

☐ Custom...

From - (mm/dd/yy)

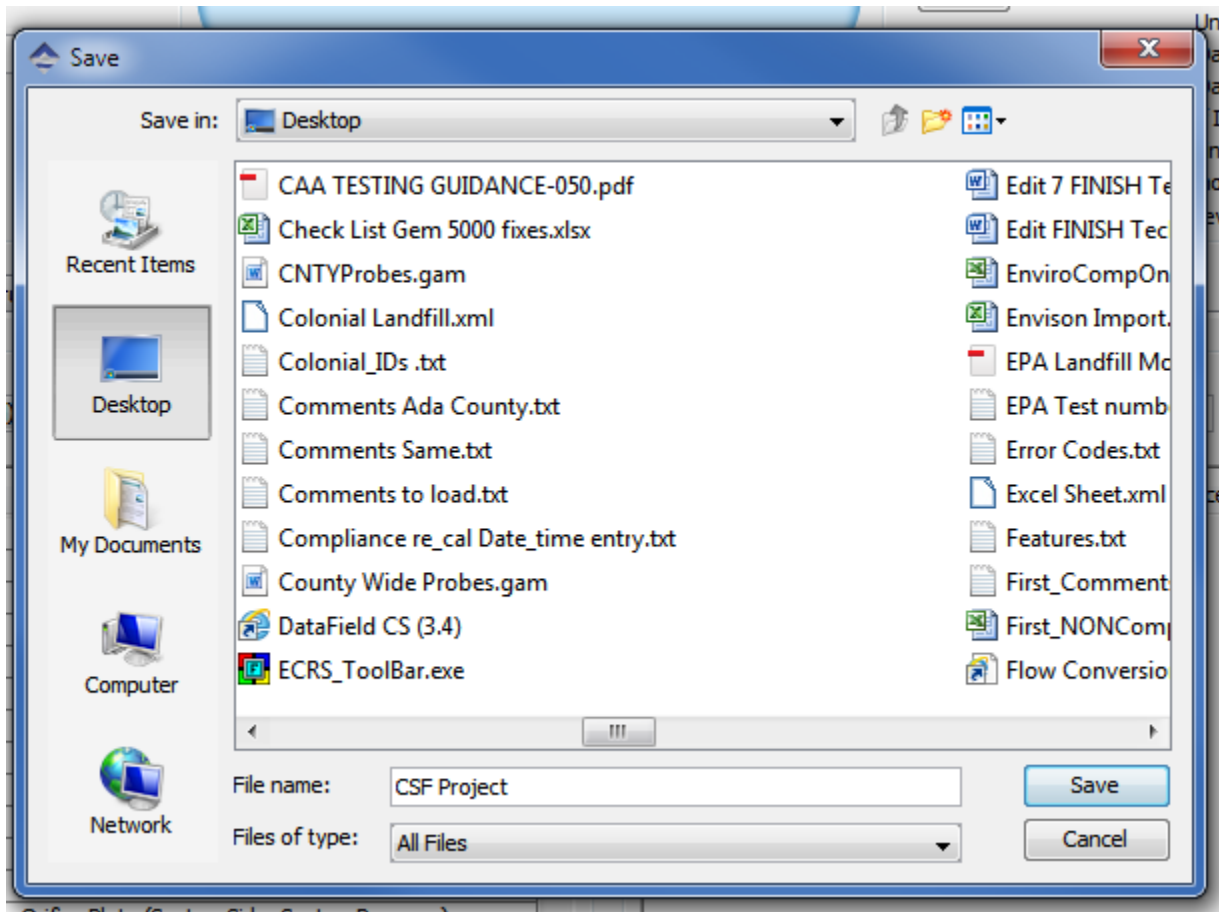
To - (mm/dd/yy)

Cancel

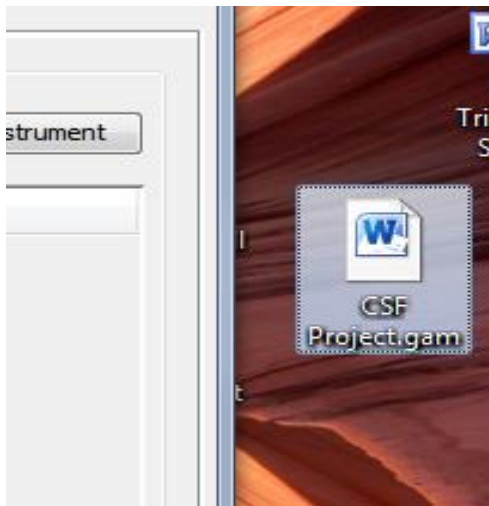
OK

Select current in projects and click OK

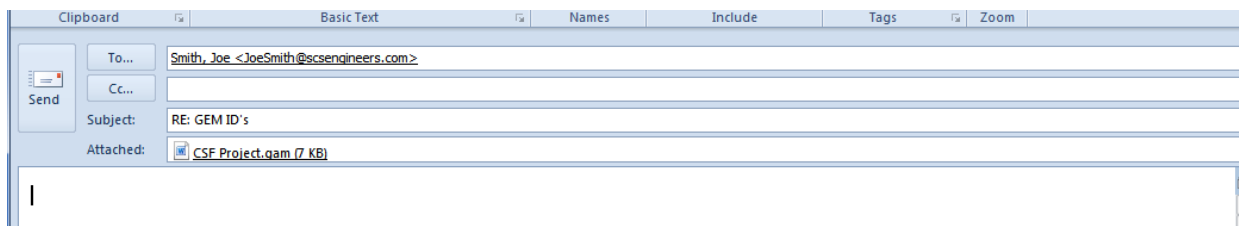
This screen will appear for you to save the file. You will need to name the file and click [Save]



The saved file will look like the gam file below



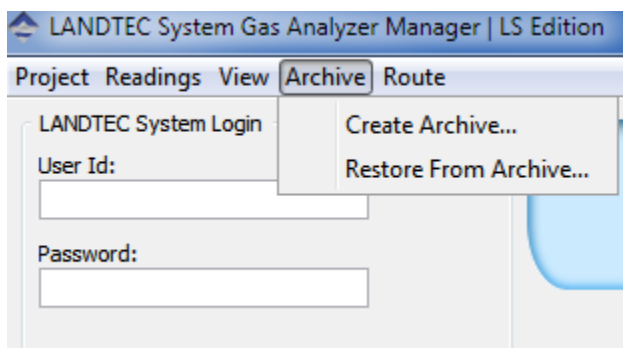
This file is encrypted and can only be read in the LSGAM program.



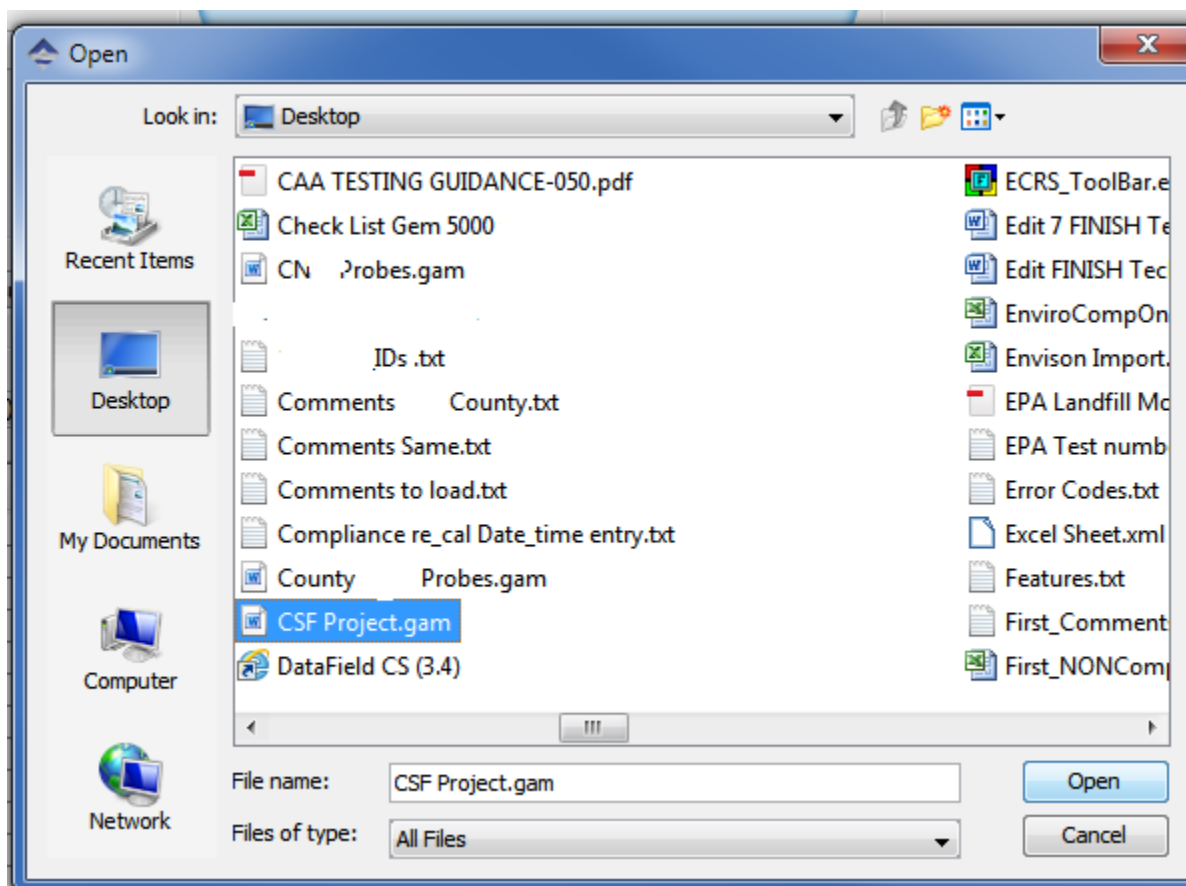
Email as an attachment

Copy and save the attachment from the email

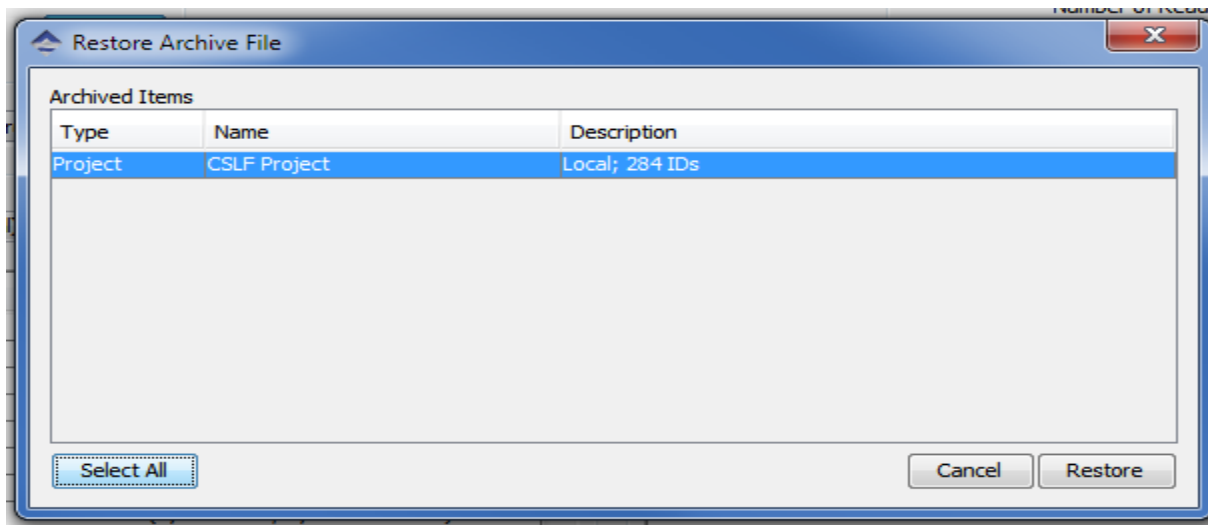
Then connect the Gem and start LSGAM on the second PC. Go to Archive [Restore from archive]



Select the file from where you saved it out of the email.



Click on Open



Click on [Select all] the name will highlight then click on Restore. The project should now be in LSGAM Be sure and [Save]

